



Distinctive Acoustical Ceiling Tile Design
SQUARELINE® Metal Ceiling Tiles

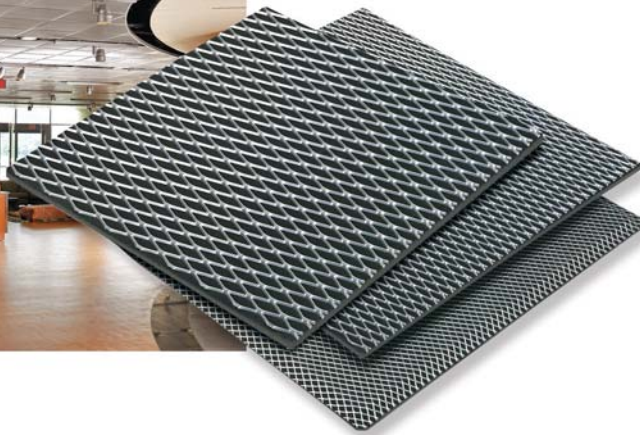
Distinctive Acoustical Ceiling Tile Design



SQUARELINE® Metal Ceiling Tiles

SQUARELINE Metal Ceiling Tiles give ceilings a stunning, high-tech look to modern interior spaces. Made from 35 to 55 percent recycled material, these expanded metal tiles are available in three distinct patterns with or without an acoustical backer.

To meet your unique vision, specify SQUARELINE in a custom dimension or distinctive color of metal to complement the décor. For a perfect match to the standard metal colors, use pinta's Ceiling Grid System in white or satin chrome.



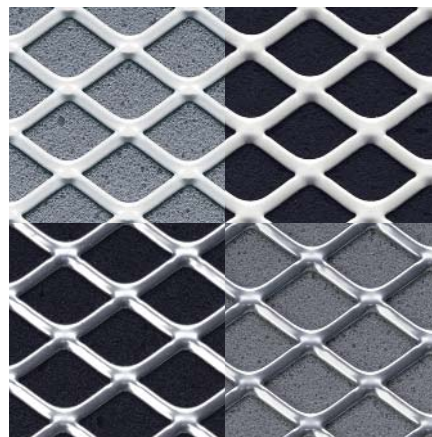
- Sleek, modern look
- Custom options
- Easy installation
- Acoustical control
- Three bold patterns:
SQUARELINEstandard™
SQUARELINEmedium™
SQUARELINEultra™



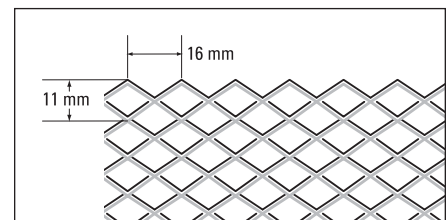
SQUARELINEstandard Metal Ceiling Tiles

SQUARELINEstandard offers a sophisticated European flair to modern offices, lobbies, retail stores and more.

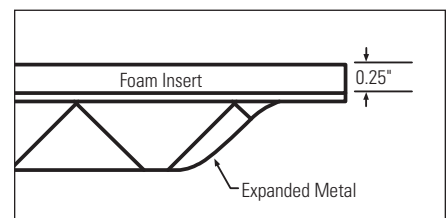
- Flat lay-in tile or beveled edge profile
- 24" x 24" or 24" x 48" dimensions



White or chrome metal with light grey or charcoal acoustical backer



- Open area of 71.4%
- Pattern dimensions of 16 x 11 mm



Beveled Profile

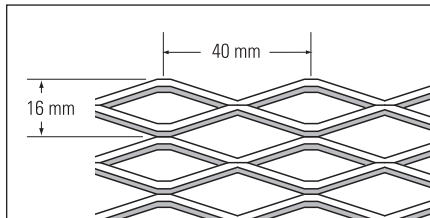
SQUARELINEmedium™ Metal Ceiling Tiles

The mid-sized pattern of SQUARELINEmedium provides a contemporary look in boardrooms, museums and restaurants.

- Flat lay-in tile
- 24" x 24" or 24" x 48" dimensions
- Custom dimensions available



Chrome metal with light grey or charcoal acoustical backer



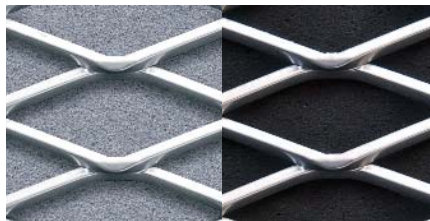
- Open area of 62.5%
- Pattern dimensions of 40 x 16 mm



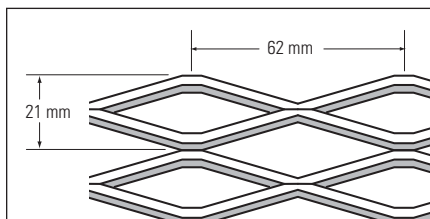
SQUARELINEUltra™ Metal Ceiling Tiles

SQUARELINEUltra has a large mesh pattern and adds a dramatic style to entries, stadiums and convention centers.

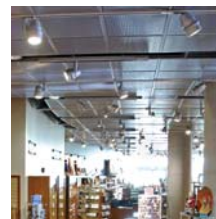
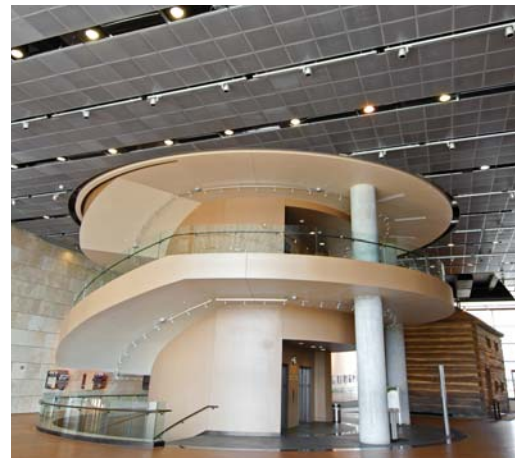
- Flat lay-in tile
- 24" x 24", 24" x 48" or 48" x 48" dimensions
- Custom dimensions available



Chrome metal with light grey or charcoal acoustical backer



- Open area of 71.4%
- Pattern dimensions of 62 x 21 mm



Distinctive Acoustical Ceiling Tile Design



SQUARELINE® Metal Ceiling Tiles

Material

- 35 to 55 percent recycled content*
- Galvanized, powder-coated expanded metal ceiling tiles
- Durable and Class 1 fire-rated
- ¼" willtec® FM acoustical backer pre-bonded to the metal tiles

Installation

- Easily drops into pinta's or any standard ceiling grid systems
- Pre-bonded, one-piece design simplifies handling
- Install at any stage of construction
- Cotton gloves recommended
- Expanded metal is directional; install with notch on all tiles facing the same direction

Physical Data — willtec FM

Tensile Strength	10 PSI (ASTM D3574-77)
Density	5.7 lbs./cubic foot
Elongation	20% (ASTM D3574-77)
Heat Conductivity	K factor = 0.38 at 50 degrees F
Long-Term Service Temperature	-76 to 302 degrees F
Fire Resistance	Class 1 (ASTM E84)
Color	Light grey and charcoal

Sound Absorption

Test ASTM C423-90a; Mounting Type E

Frequency (Hz)	¼" Thick willtec FM Backer
125	0.37
250	0.59
500	0.30
1000	0.50
2000	0.75
4000	1.09
NRC	0.55

* Recycled content varies based on the steel batch.

pinta acoustic, inc. manufactures a broad range of attractive acoustical materials including: CONTOUR®, HARMONI™ and WHITELINE® Ceiling Tiles; SQUARELINE Metal Ceiling Tiles; BIOLINE™ Wood Ceiling Tiles; SONEX® Baffles and Panels; FABRITEC™ Wall Panels; PROSPEC® Barriers, Foams and Composites; PROSPEC Decibel Drop™ Viscoelastic Damping Compound and pinta Ceiling Grid Systems.

See Section 09 51 00 for more pinta ceiling tiles.



On May 31, 2007, illbruck acoustic, inc. changed its name to pinta acoustic, inc.